

User Manual

For Macintosh OS

Artisul LCD Pen Tablet | Model: M0610 Pro

The logo for Artisul, featuring a stylized 'A' with a brushstroke-like tail on the left, followed by the word 'ARTISUL' in a bold, black, sans-serif font.

Precautions

1. Please read this manual carefully before using, and keep it well for future reference.
2. Before cleaning the tablet please unplug the power cord and wipe with a soft damp cloth, do not use any kind of detergents.
3. Don' t expose this product to water or other liquids. Take care to never spill liquids onto the tablet and pen. Exposing this product to water or other liquids may cause product malfunction or electrical shock.
4. Do not place the tablet on where is unstable or a height for children reaching easily in order to avoid danger. Prevent children from swallowing the pen nib or side switch. The pen nib, side switch, or other movable parts may accidentally be pulled out if children are biting on them.
5. Power off your tablet in locations where/when electronic devices is not allowed. Because the tablet may cause other electronic devices to malfunction in some locations where/when the use of electronic devices is not allowed, such as within an airplane, be sure to turn off the tablet.
6. Do not disassemble the tablet and pen. Do not disassemble or otherwise modify the tablet or pen. Such action may cause heat generation, ignition, electronic shock, or other damage, including human injury. Disassembling the product will void your warranty.
7. While getting the components replaced, you are supposed to guarantee that the repairman is using the substitute components specified by the manufacturer. Unauthorized component replacement might cause fire, electric shocks or other dangers.
8. Do not insert foreign material into the USB port or any other opening of this product. If a metal object or foreign material is inserted into a port or other opening of this product it may cause the product to malfunction or burn out, or cause electronic shock.

Contents

1. Product Overview	3
1.1 Tablet Introduction	3
1.2 Product and Accessories	3
1.3 Setting up the Tablet	4
1.4 Driver Installation	5
1.5 Pen Nib Replacement	6
2. Product Basic Operation	6
2.1 Using the Pen	6
2.2 Using the Tablet	8
3. Function Setting	10
4. Function Setting	11
4.1 Device Connection Notification	11
4.2 Press Keys Setting	11
4.3 Pen Setting	14
4.4 Import and Export Data	17
5. Specifications	18
6. Trouble Shooting	19
6.1 Possible Breakdowns Related to TABLET	19
6.2 Possible Breakdowns Related to SYSTEM	19
7. After-service Contact	19

1. Product Overview

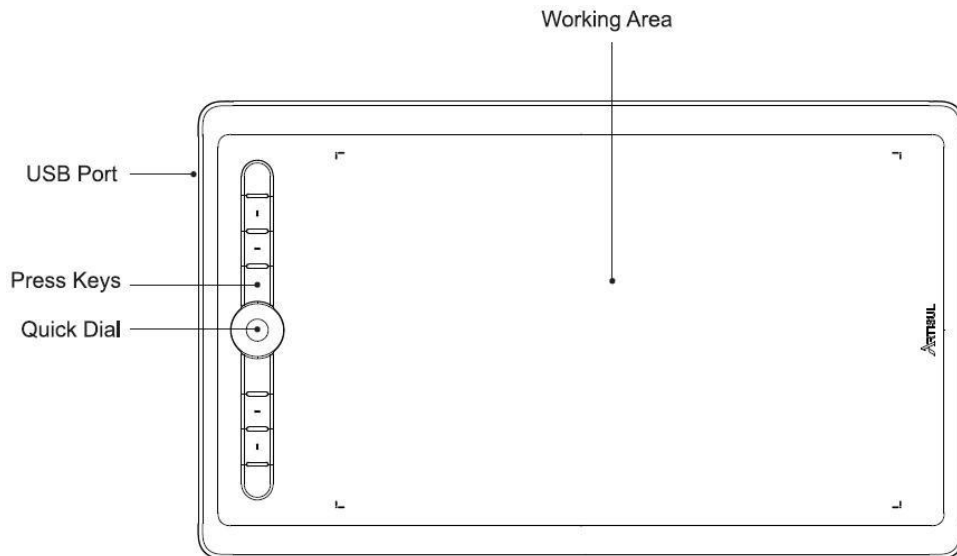
1.1 Tablet Introduction

Thanks for choosing Artisul® M0610 Pro creative pen tablet. This is a new generation of professional battery-free drawing tablet, which can greatly improve your work efficiency of painting and creation, and full of fun. You can freely do painting and writing, depicting different lines and colors, just as the pen writes on the paper, which brings you a real shock experience.

To give you a better understanding and using of your tablet, please read this user manual carefully.

1.2 Product and Accessories

1.2.1 Product Overview



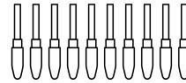
1.2.2 Other Accessories



Stylus Pen



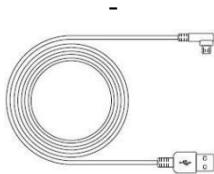
Pen Bag



Pen Nibs



Pen Nib Clip



USB Cable



Glove

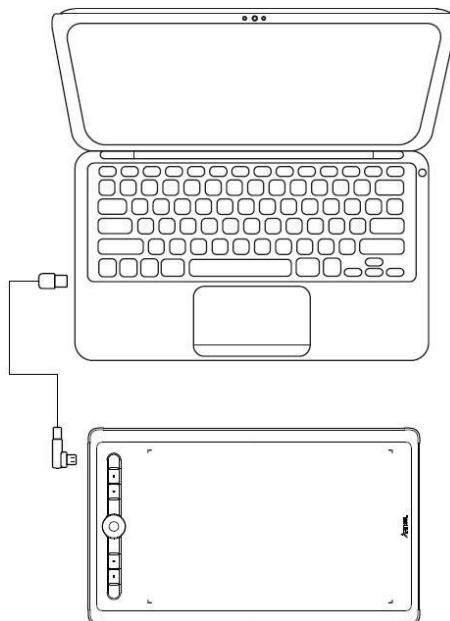


Quick Start Guide

1.3 Setting up the Tablet

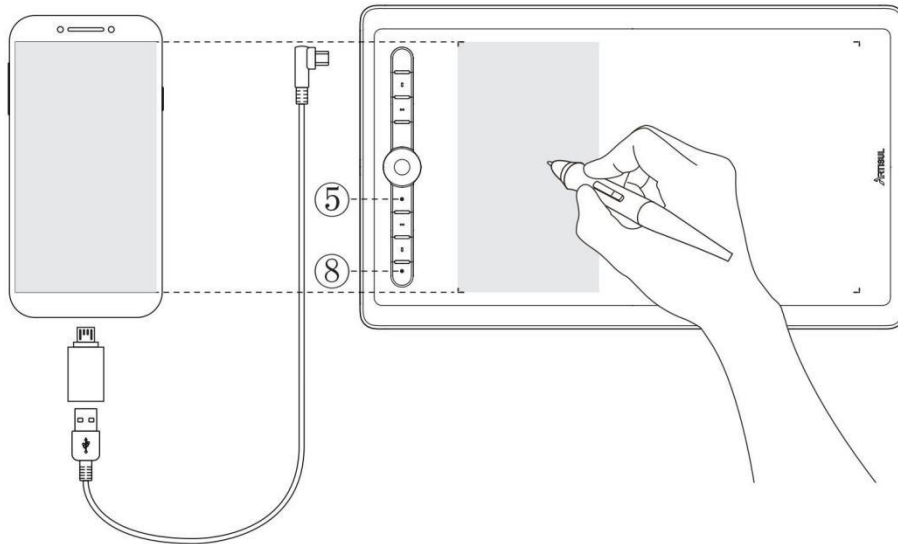
1.3.1 Connecting to the Computer

Take out the USB cable from the package, then connect the tablet to your computer.



1.3.2 Connecting to an Android Mobile Phone

1. Please use Android phone/tablet in portrait mode.
2. Please make sure your phone/tablet OS is as following: Android OS 6.0 or later.
3. For some models, you need to go phone or tablet "Settings" , and then enable "OTG" function.
4. Choose the right OTG Adapter from package, which depends on USB port type of your phone/tablet. Then connect the pen tablet to your phone following the illustrations below.



Notes:

1. The pen tablet can work without installing any driver into your phone/tablet.
2. Once connected, the tablet will automatically enter phone mode, in which the pen can only work in the left gray area.
3. If it fails to recognize the tablet as the phone mode, please press the button ⑤,⑧ at the same time for 1 seconds to enter phone mode.
4. Please note that the press keys of pen tablet and digital pen are not supported in phone mode.

1.4 Driver Installation

1.4.1 OS Support

Windows 7 or later, Mac OS 10.8.5 or later, Android 6.0 or later

1.4.2 Install via Download

Please download the driver from our website: www.artisul.com/downloads

Notice:

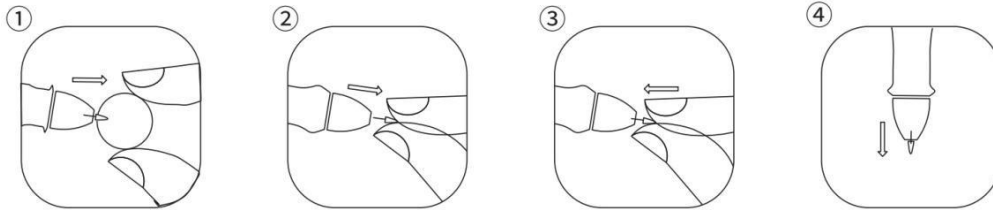
1. Before installing, you need to uninstall other driver of similar products, including the old driver of this product.
2. Before installing, please close all graphics software and anti-virus software to

avoid unnecessary mistake.

3. Before installing, you need to connect your Artisul product to the computer.

1.5 Pen Nib Replacement

The nib will be wear out after using for long time, then you need to replace a new nib.



2. Product Basic Operation

2.1 Using the Pen

2.1.1 Hold the pen

Hold the pen as you hold a normal pen or pencil. Adjust your grip so that you can toggle the side switch easily with your thumb or forefinger. Be careful not to accidentally press the switch while drawing or positioning with the pen.

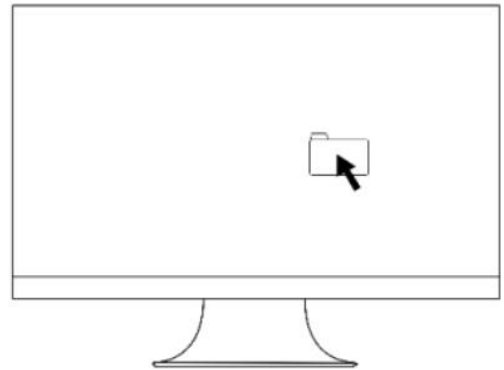
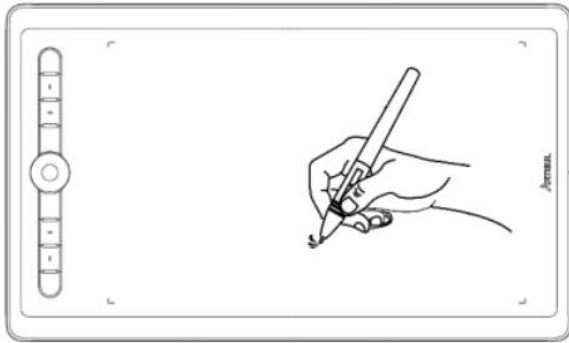
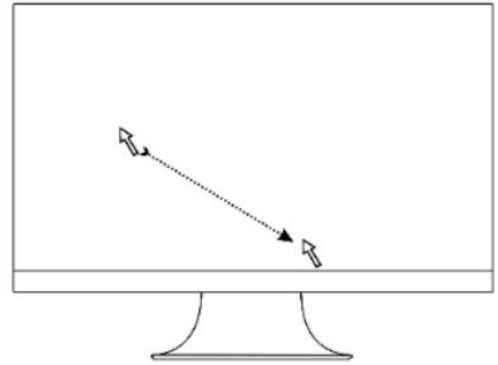
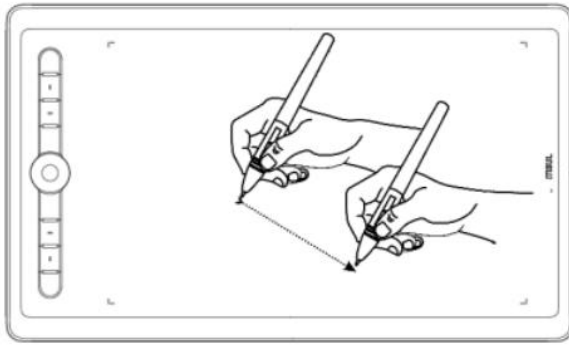


Notice: When not in use, place the pen in the pen case or on the desk. Do not place the pen on the surface of screen, which may interfere with the use of other screen cursor positioning equipment, it may also cause your computer unable to enter the sleep mode.

2.1.2 Position the cursor

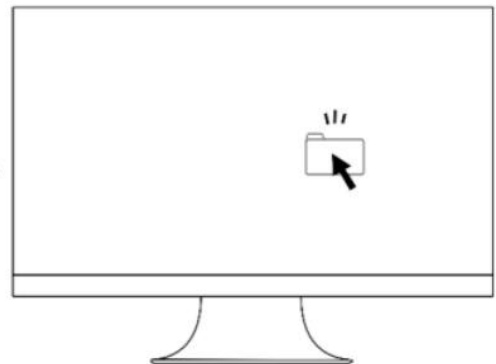
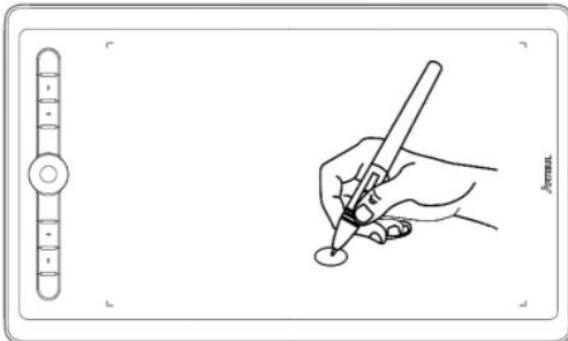
Move the pen slightly above the active area without touching the screen surface, the cursor will move to the new position accordingly.

Press the pen tip on the screen to make a selection. Tap the screen once with the pen tip, or touch it to the screen with enough pressure to register a click.



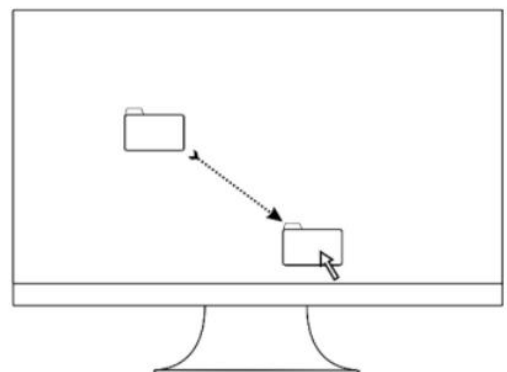
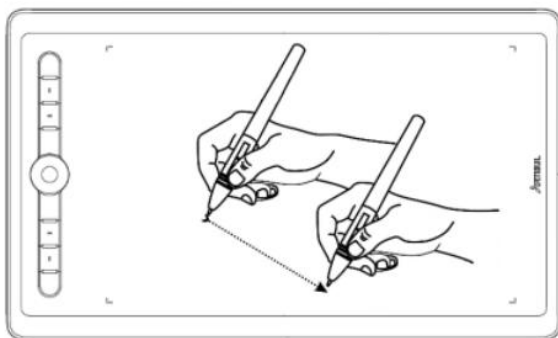
2.1.3 Click

Use the pen tip to tap on the screen once to produce a click. Tap to highlight or select an item on the screen and double-click to open it.



2.1.4 Move

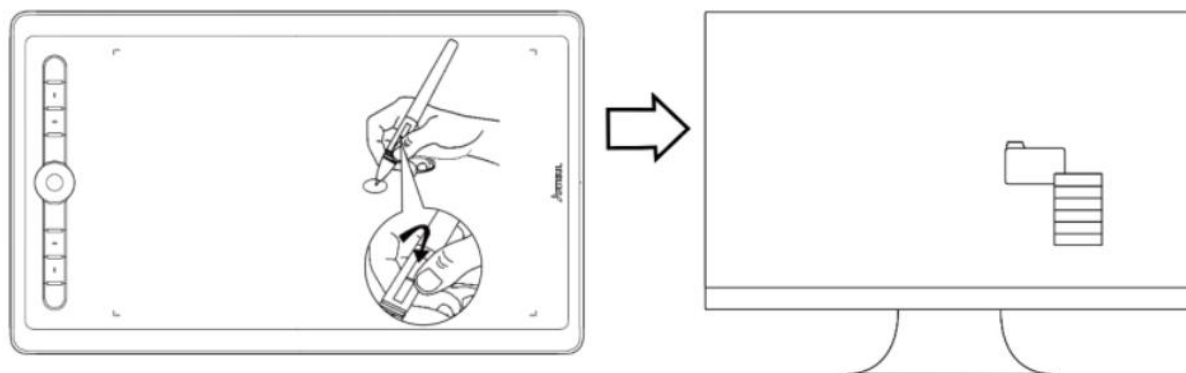
Select the object, then slide the pen tip across the screen to move it.



2.1.5 Use the side buttons

The side buttons of the pen can be set to two different customizable functions. You can use the buttons whenever the pen tip is within 10mm of the tablet active area.

You do not have to touch the pen tip to the tablet in order to use the switch.



2.2 Using the Tablet

2.2.1 Press Keys & Dial

There are 8 press keys and one dial on the tablet. You can modify the functions according to your own habits to improve your work efficiency. See “Press Keys Setting” .

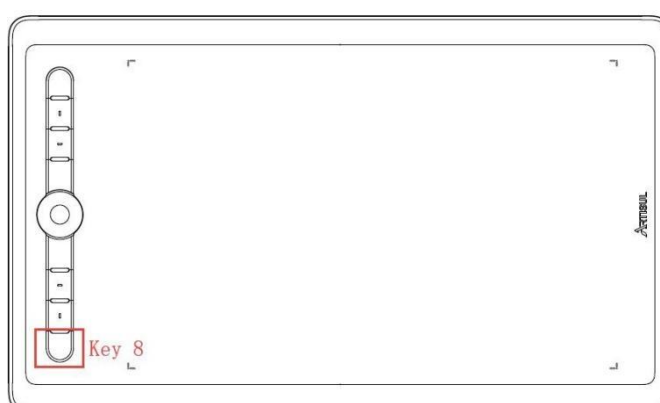
To use the dial in the “Use Dial” mode:

1. Press the centre of the dial to select the function to be achieved.
2. Rotate the dial to use the function.

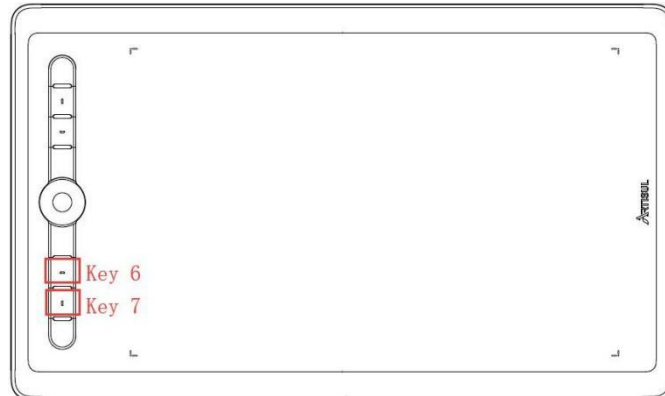
2.2.2 LED Indicators of Press Keys & Dial

The LED indicators of press keys and the dial support monochromatic, polychromatic, and off modes. To customize the LED indicators:

1. When you press key 8, the indicators will switch between the three modes.



2. When the indicators are in monochromatic or polychromatic mode, press and hold key 8, and press key 6 or 7 to adjust the indicator brightness.



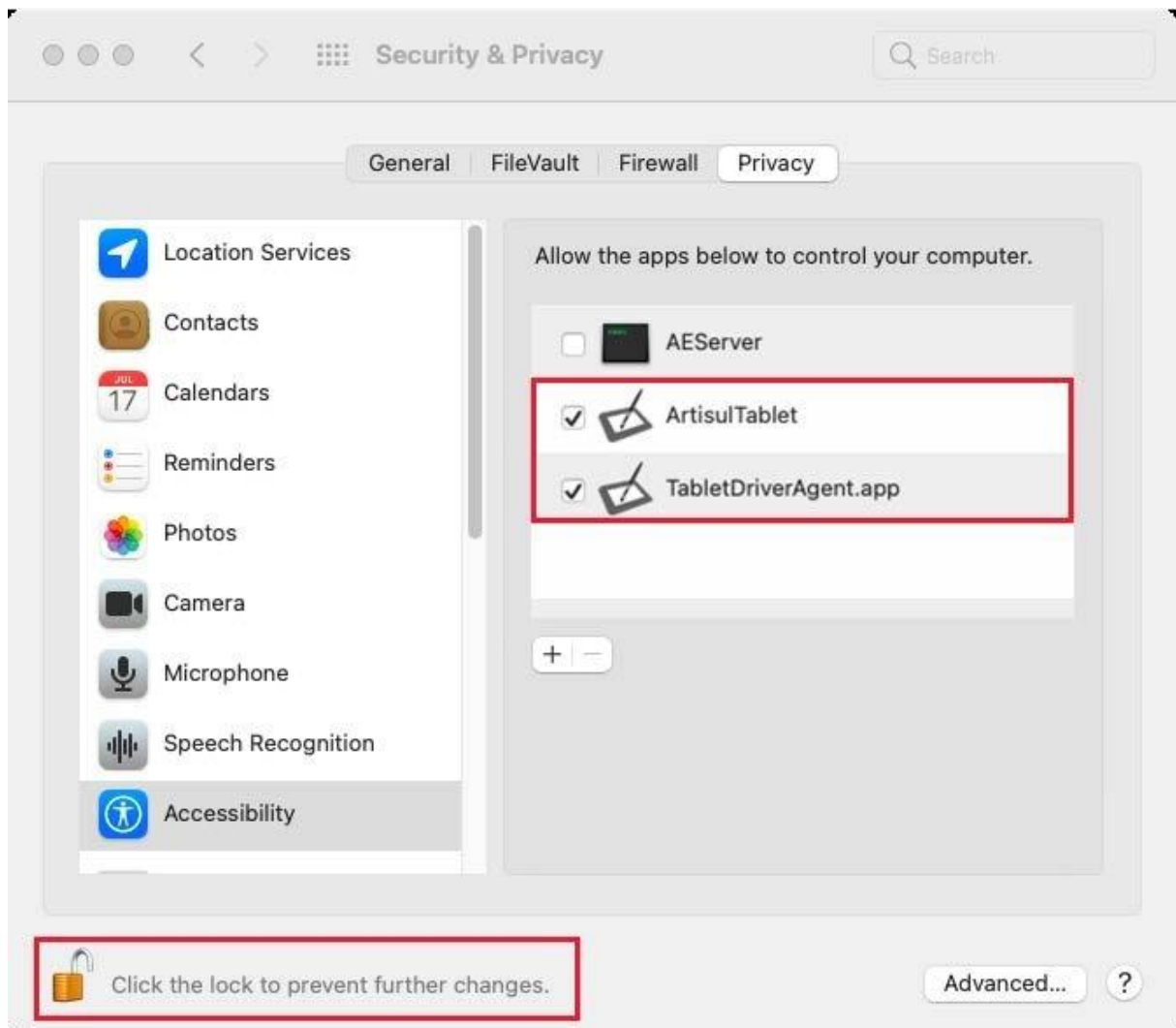
3. When the indicators are in monochromatic mode, press and hold key 8, and rotate the dial to select the desired color.

Notes:

1. The indicators in monochromatic mode will switch to polychromatic mode after the tablet is not in use for one minute.
2. The indicators will switch to off mode after the tablet is not in use for six minutes.

3. Function Setting

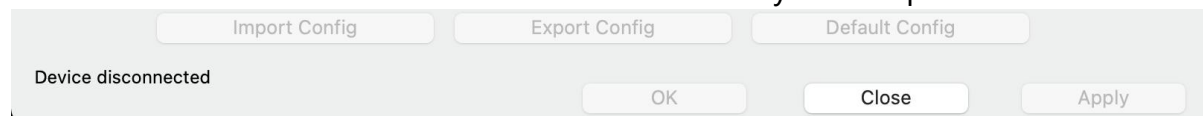
- 1.Put the downloaded driver into "Applications" .
- 2.Click "Applications" and then open the driver.
- 3.Use the digital pen to tap on the screen of the pen display and the " Accessibility Access " pop-up window appears. click " Open System Preferences" . Go to "Security & Privacy" and click "Privacy" . Click the lock icon to unlock the settings. Then enter your username and password. Tick the checkbox on the left of the driver to enable it and you can use the device.



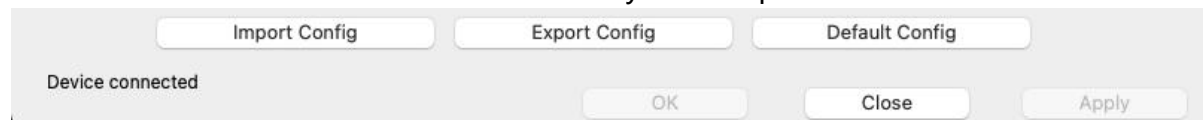
4. Function Setting

4.1 Device Connection Notification

1.No Device Detected: The device can not be identified by the computer.



2.Device Connected: The device is identified by the computer.



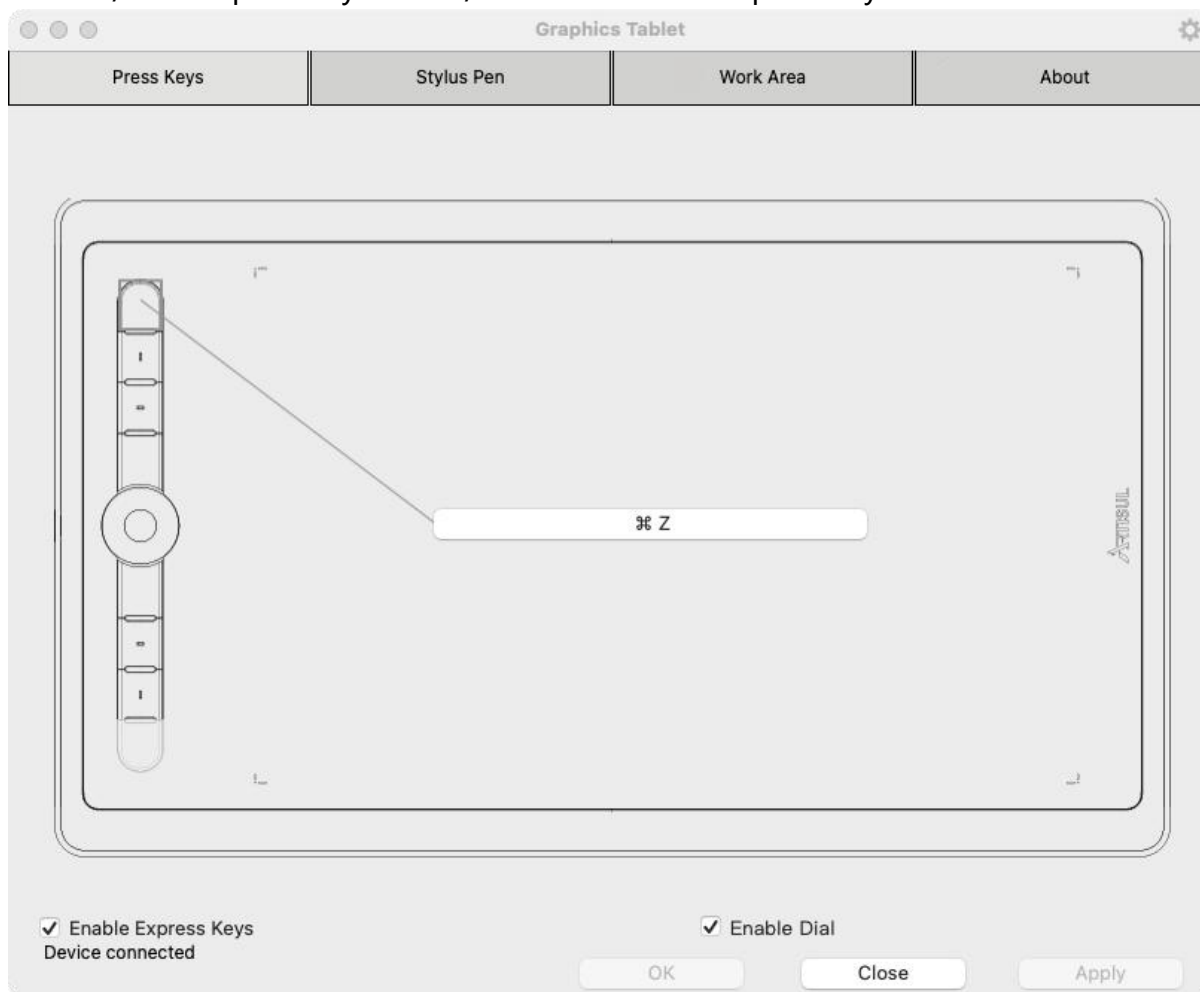
4.2 Press Keys Setting

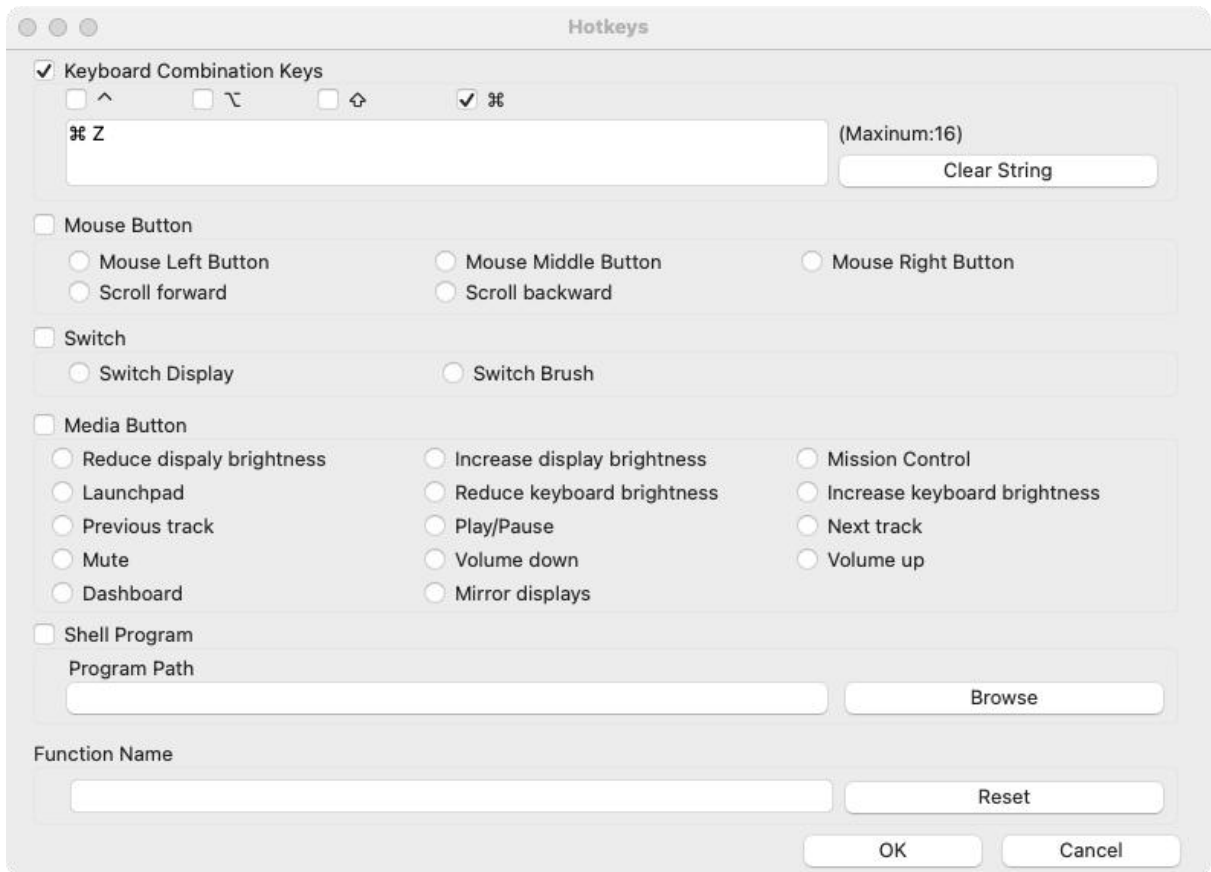
4.2.1 Hotkeys Setting

Default functions: Place the cursor over one of the buttons on the driver or click a button to check its default value.

Custom functions: Click a button and then a pop-up dialog box appears. Choose what you want and set its function.

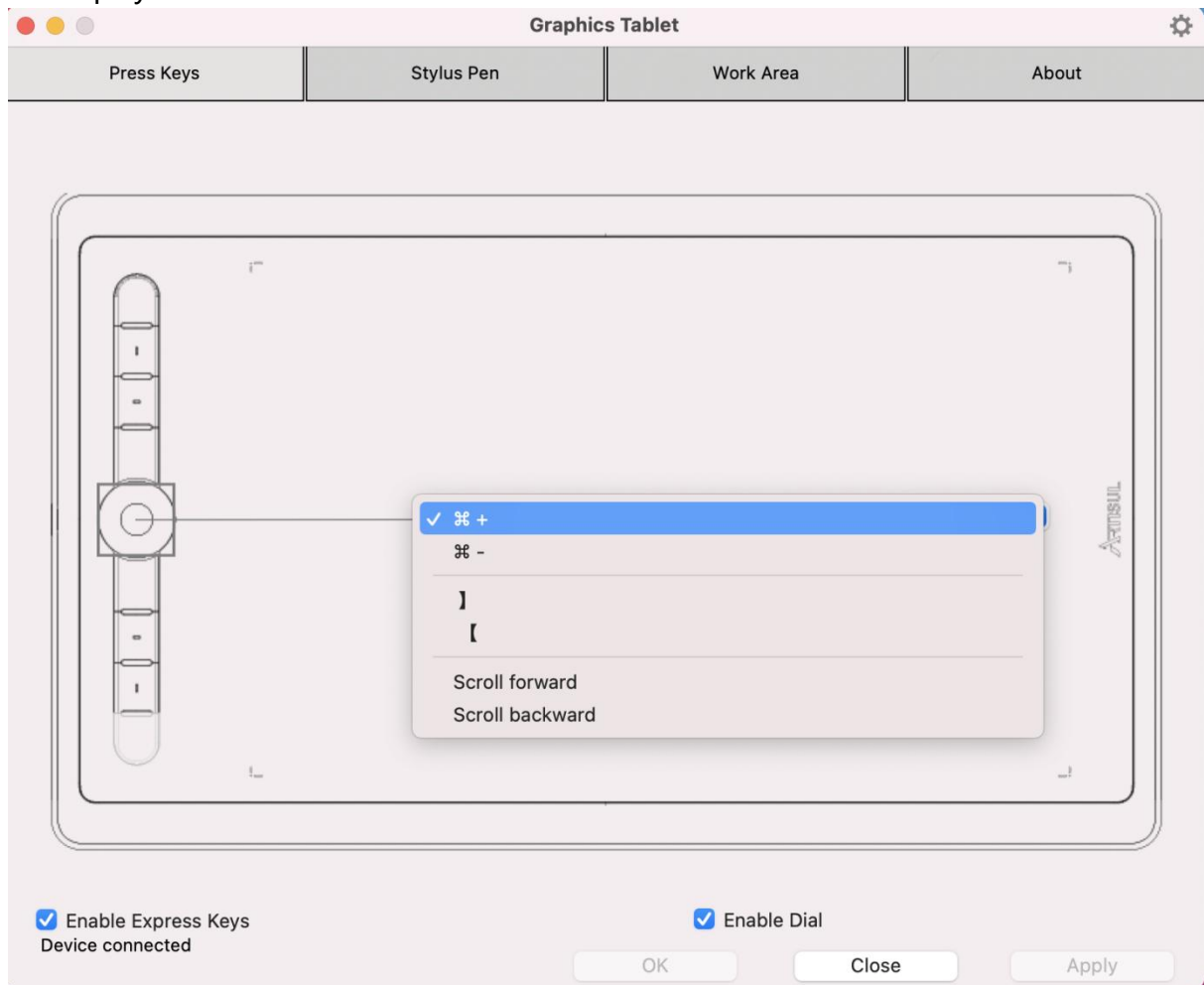
Enable/Disable press keys: Check/uncheck "Enable Express Keys" .





4.2.2 Scroll Dial Setting

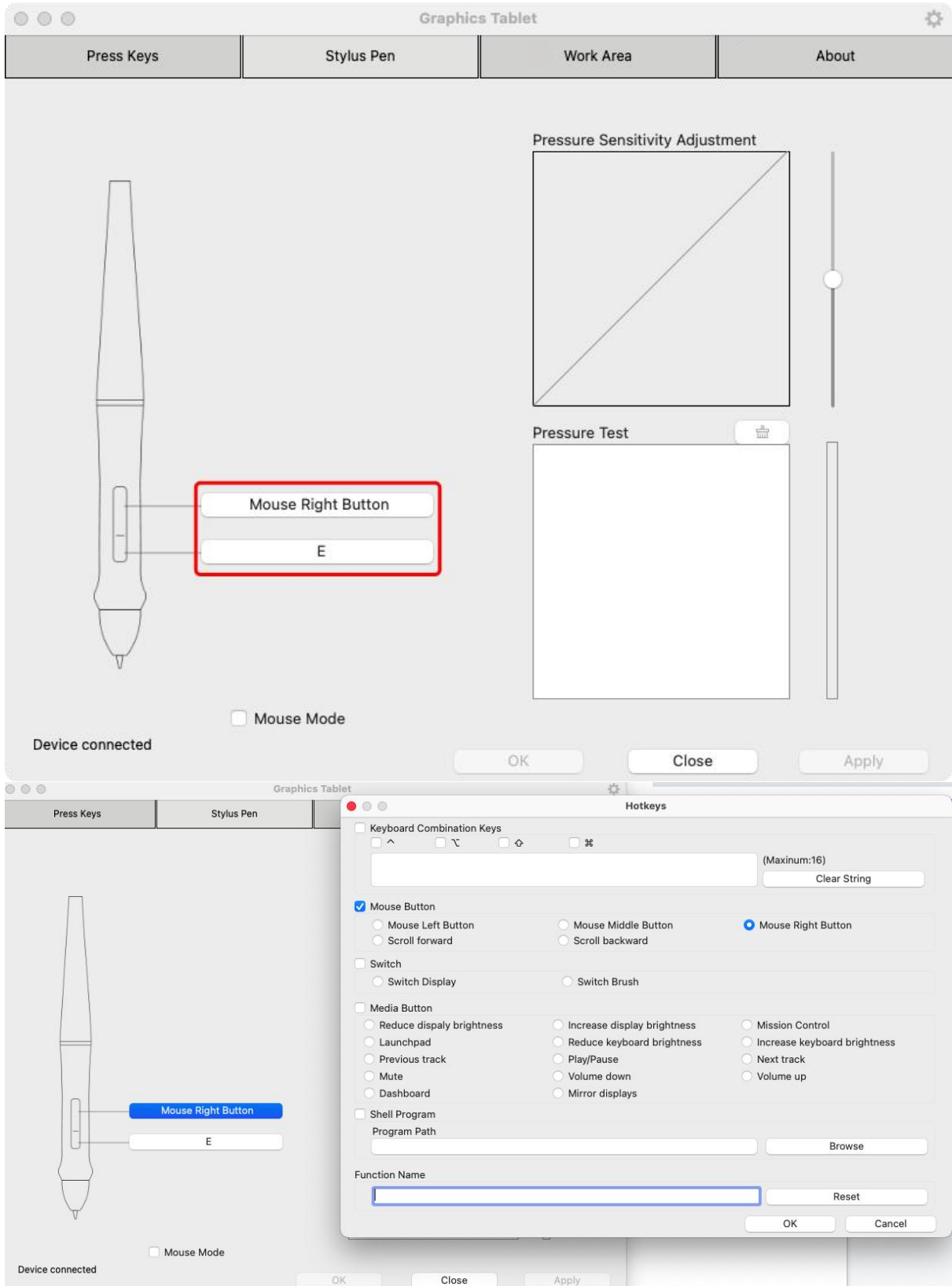
1. Select "Dial" .
2. Click one of the six values and select the function to be achieved on the menu displayed.



4.3 Pen Setting

4.3.1 Pen Button

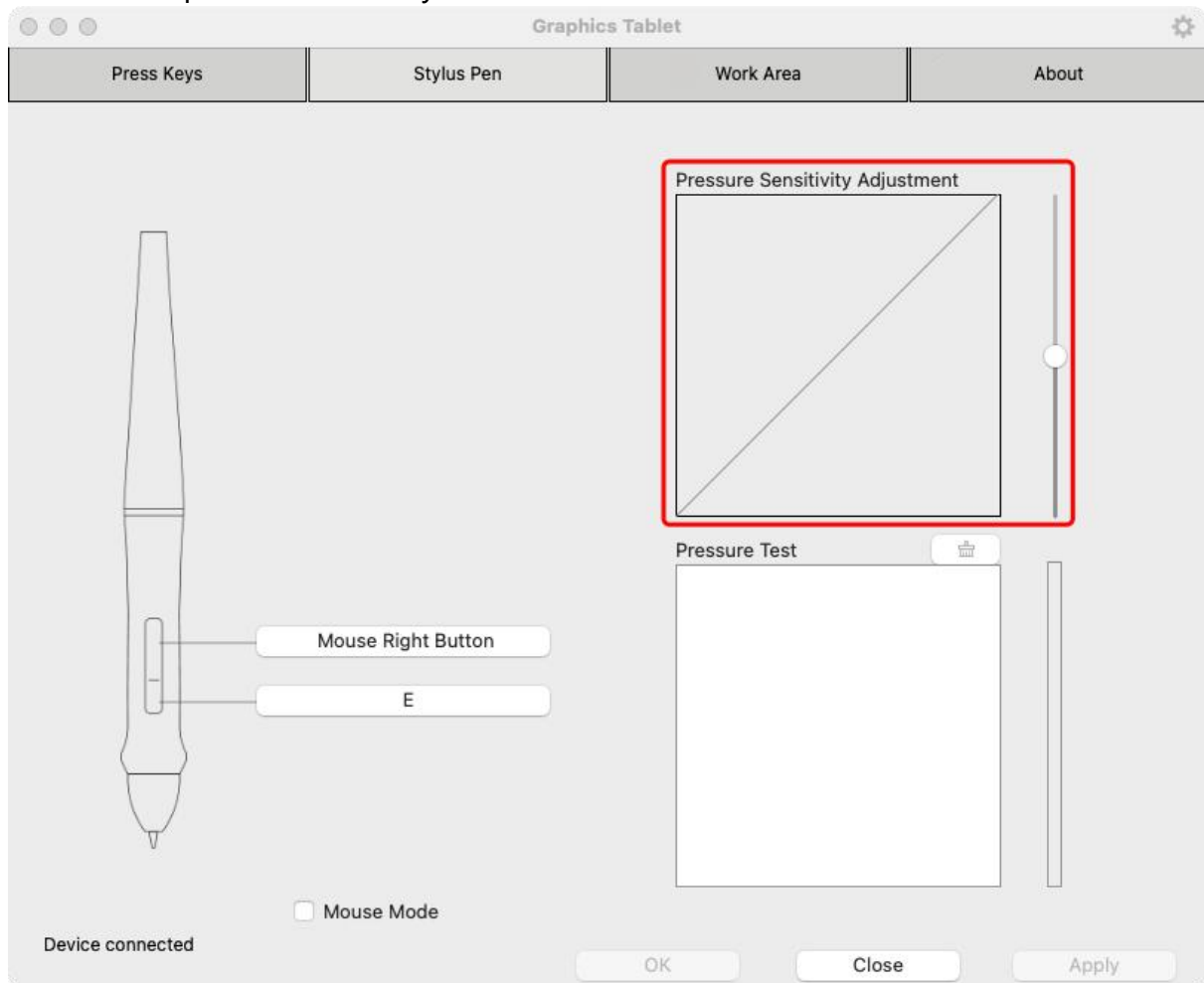
Click the buttons to set custom functions. You can enter a name for the keystroke and choose the function you want.



4.3.2 Pressure Sensitivity

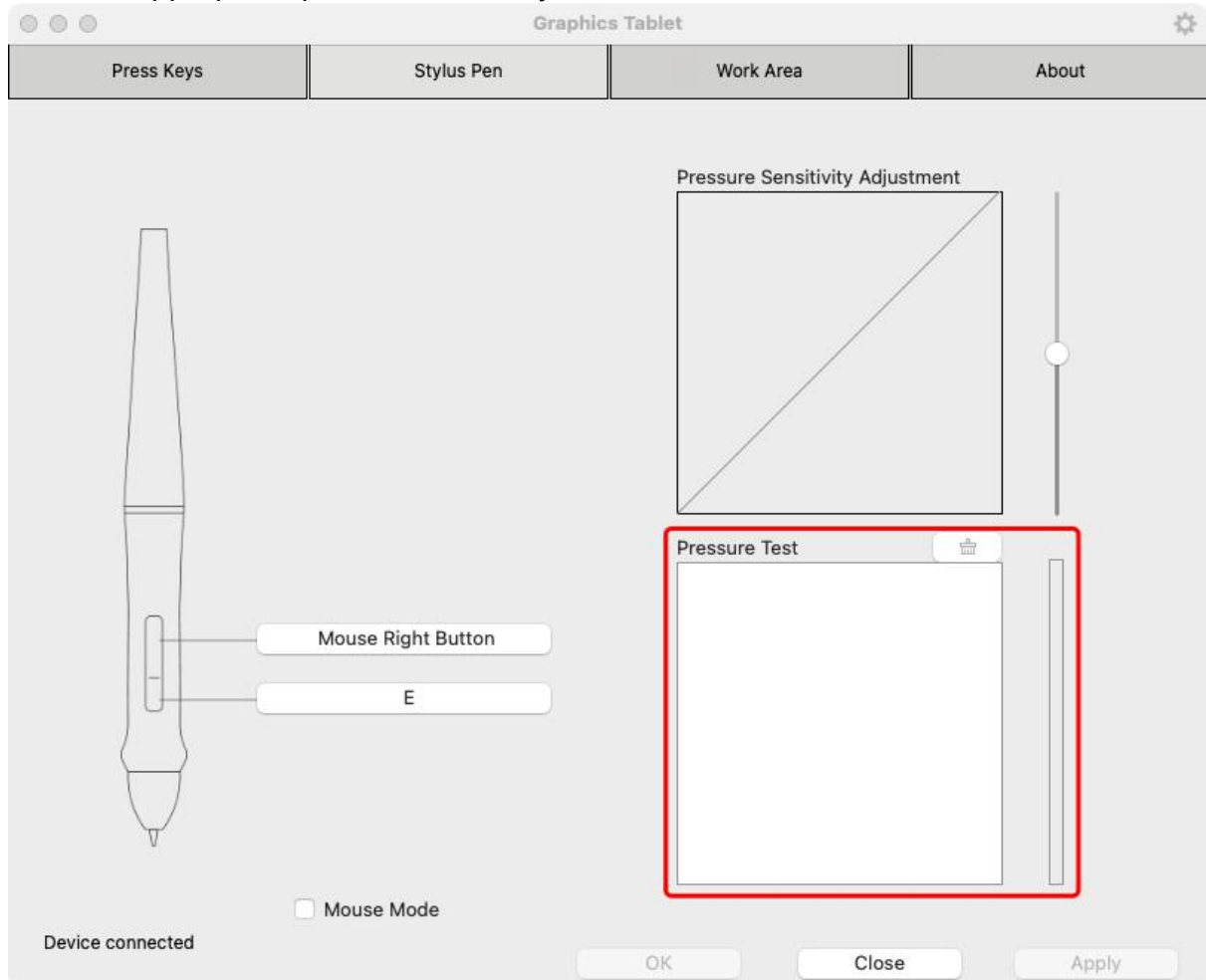
Adjust the pressure sensitivity level by dragging the slider in the Pressure Sensitivity box shown below:

Move the slider up to get a high level of pressure sensitivity, and move it down to get a low level of pressure sensitivity.



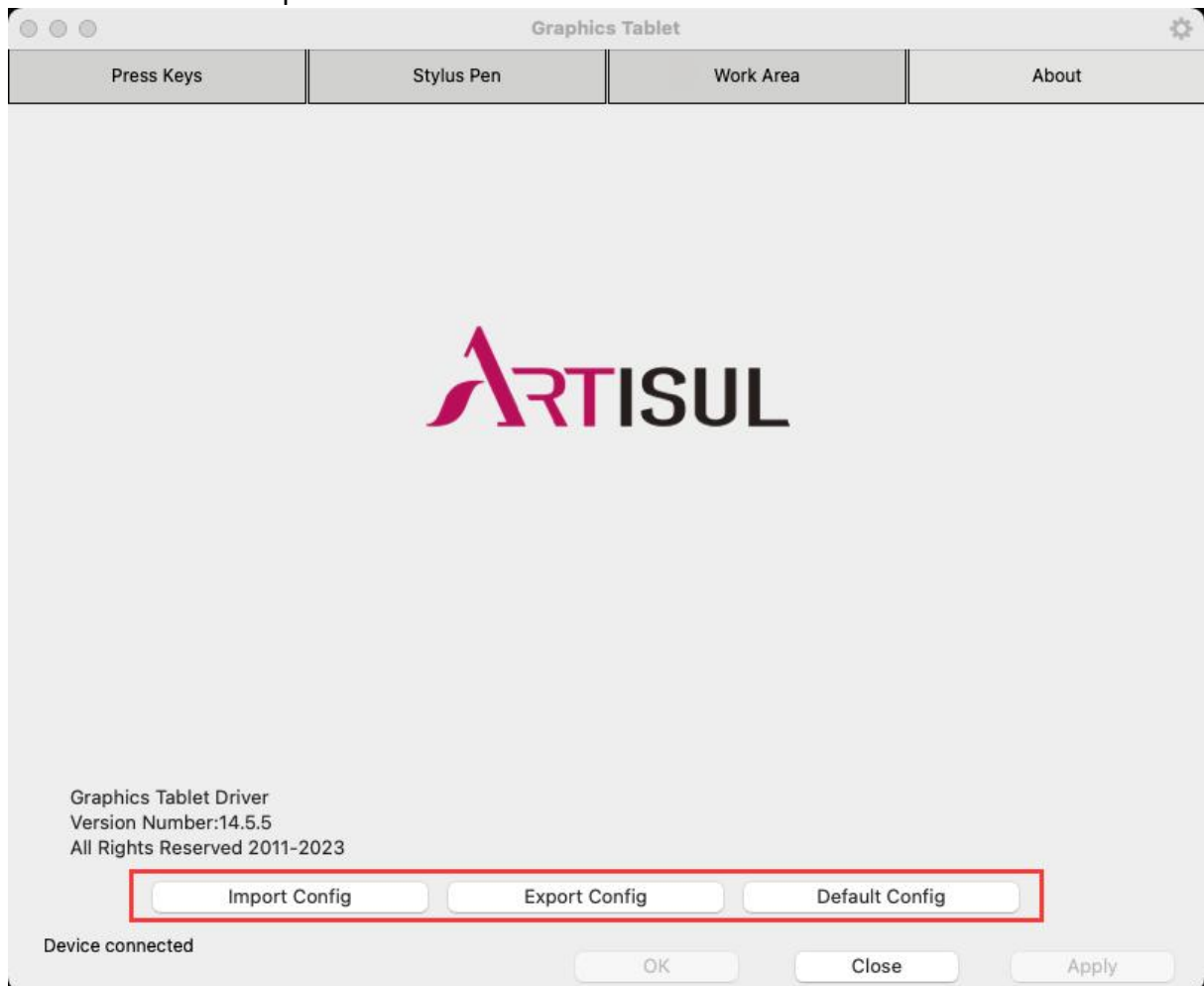
4.3.3 Pressure Sensitivity Testing

Draw lines in the Pressure Test box with the pen, and the bar on the right will simultaneously show the pressure changes on the pen nib. Test several times until you find the appropriate pressure sensitivity level.



4.4 Import and Export Data

The functions you set in the driver will be saved and you can import or export these data in Backup.



5.Specifications

Creative Tablet	
Model	M0610 Pro
Touch Technology	Battery-free Electromagnetic Resonance
Working Area	258.47 x 161.54 mm (with your computer) 161.54 x 100.5 mm (with your mobile phone)
Dimension	350 x 208 x 9 mm
Touch Resolution	5080 LPI
Report Rate	300 PPS
Pen Sensing Height	10 mm
Interface	Type-C
Press Keys	7 Customized Press Keys
Tilt Range	±60°
OS Support	Windows 7 or later Mac OS 10.8.5 or later Android 6.0 or later
Digital Pen	
Model	P58B
Dimension	149 x Φ14mm
Weight	14 g
Pressure	8192 Levels

6. Trouble Shooting

6.1 Possible Breakdowns Related to TABLET

Abnormal Phenomena	Possible Solutions
There is no pressure in the graphics software but the cursor moves	You may have installed other tablet drivers or opened the drawing software when installing the driver. Please uninstall all drivers and close the drawing software, then reinstall the driver. It's better to restart your computer after finishing the installation.
The pen does not work	<ol style="list-style-type: none">1. Make sure you are using the pen that originally came with your tablet.2. Make sure you installed the driver correctly.
Press Keys does not work	<ol style="list-style-type: none">1. Make sure the Press Keys function were enabled in the driver.2. Make sure you have correctly defined the Press Keys.
The computer can't enter sleep mode	When you are not using the tablet, please do not put the pen on the tablet surface, which will keep the computer awake.
The side button of the pen doesn't work	When pressing the side button, please make sure that the nib didn't touch the tablet surface and the distance between the nib and surface is within 10mm.

6.2 Possible Breakdowns Related to SYSTEM

Abnormal Phenomena	Possible Solutions
The computer can't recognize the tablet	Make sure the USB port is functional, if not, please change to another USB port.

7. After-service Contact

If you have any questions, please feel free to contact us at:

Website: www.artisul.com

Email: service@artisul.com